

# MAPLEWELL NEWSLETTER

## Preparing for Adulthood

### Maplewell Hall Summer Fete 19th May

On Sunday Maplewell Hall held our awaited and much enjoyed Summer Fete.

The Fete was very well attended and the weather was glorious. The pupils that are going on the Thailand trip came to volunteer and help out, as did some very dedicated staff and parents.

There was a huge variety of stalls to visit including craft stalls, inflatables, sweets, cakes, DT and woodwork, candles, ice cream and BBQ.

All stalls were very well supported and staff and pupils worked very hard to help out.

After working out the costs, the Fete has made over £1000 towards the Thailand trip, which has been an excellent effort!



## Curve Trip

18 of our students took part in the Leicestershire SEN Dance Festival on 14th May, this involved all students committing to weekly rehearsals, following a choreographed routine and then performing at the Curve Theatre in front of hundreds of people.

All students performed to an excellent standard and represented Maplewell Hall School incredibly well. We have received a number of positive comments about their performance

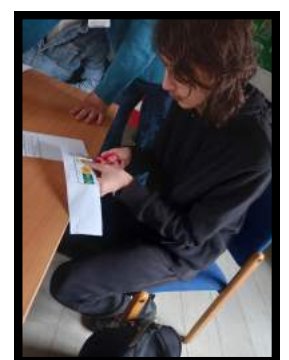
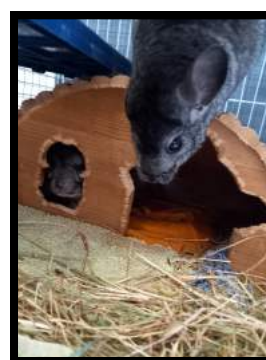
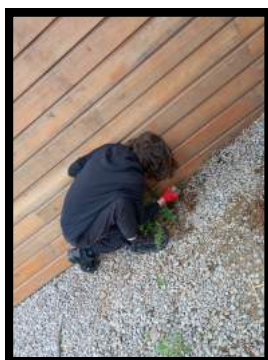
We are all extremely proud of the what the students achieved and Miss Crossley is already planning something spectacular for next years!



## College Visit

One of our Student's went to visit WHM Work Connections College.

"I went to WHM and the first thing we did was get into an off-road buggy to get to the right site, we drove along the winding roads with the wind blowing us. When we got there, we went into a cabin and the students there were very nice. We did a little bit of work and then went to clean out the guinea pigs and rabbits, we had to clean out their cages so we could clean them. We sat down for dinner and all had it together and laughing. We then started doing weeding and we went to find some to dig out."



## 4JMC Independent Living

Busy week for 4JMC.

We have been making ice cream as part of our class Enterprise and Independent Living Skills.

We have been shopping in the community for ingredients and practised our money skills.

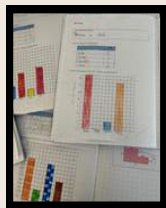
In Science, we have been working on hygiene and bacteria and what we need to keep clean.

The class have practised folding clothes and doing the laundry!



## 7A Maths

Students in 7A enjoyed doing a mini-statistics project in Maths using things they have learned in recent lessons. They collected data on a topic of their choice around the school, and presented it using different statistical diagrams. They then shared some of their findings with the whole class.



## P16 Home Cooking Lessons

Here are Mrs Drewitt's class from Home Cooking at P16, very proudly showing off their chopping and slicing techniques for a vegetable noodle stir fry - the staff were really jealous as the lovely aromas wafted through the building and they came to investigate what we were making!



## P16 Maths

With 5LR (Post-16), a few weeks ago we were looking at tessellating shapes and rotational symmetry and how they could be made into artwork. I've attached pictures from the display we made.



## Bronze DofE

Post 16 DofE Bronze students trekked off on their qualifying hike on May 13th-14th. The two-day expedition covered 19 kilometres in the Charnwood Forest area with an overnight camp at Main Site in Woodhouse Eaves. Our Silver participants were out at the same time. Theirs was a practise expedition in the same area but over three days with two overnight camps covering a total distance of 26 kilometres. The weather started out with a mixture of sun and rain and then improved to excellent walking conditions: cool with a gentle breeze. Groups performed well and supervising staff were mostly happy with their navigation ability. Camp craft was also pleasing with groups cooking independently, skillfully pitching their tents and managing to stay dry during the very wet night on the 13th. As this was a practice for our Silver students it bodes very well for their June qualifying expedition. Well done to all!

## Developing Literacy Skills at Maplewell

We know that developing literacy skills is essential in order for our students to be successful at Maplewell and in their lives outside of school. It can be difficult to know how to support them with developing these skills at home, so to support with this, [here is a link to our monthly literacy newsletter](#). Once a month we will share what students have been focusing on in reading time, as well as suggestions for things you can do together at home.

If you have any suggestions or questions, please contact me via email:  
[k.durrands@maplewell.leics.sch.uk](mailto:k.durrands@maplewell.leics.sch.uk)

Mrs Durrands  
Head of English

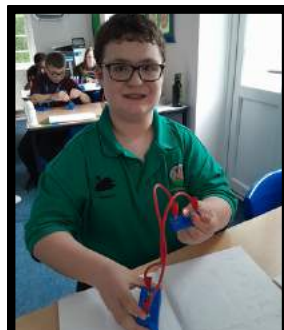
## World Laughter Day

For IICJ's Enterprise we looked at different festivals that are celebrated. Upon searching we found World Laughter Day! IICJ then decided that to spread laughter and joy we would dress up in our funniest costumes, we invited the whole school to join in with us and they did not disappoint. We had staff and students dressing up, and the whole day was filled with laughter and joy, we decided that we would donate half of our money to the library to help buy some new equipment for this space.



## Science Experiments

The 3ESH class have been working hard on Circuits for Science. To explore how they work, we have made series and parallel circuits. The class have been testing different materials to see which are insulators and which are conductors. We also made the most of the nice weather and became a human circuit, using a ball to simulate the electricity passing from component to component, with different students acting the parts e.g. jumping to show a bulb being lit.



## Limerick Competition

As part of the World Laughter Day celebrations, the student librarians and Mrs Goodman ran a limerick writing competition. A limerick is a short, funny poem consisting of five lines with a specific rhyme scheme. The rhyme scheme of a limerick is typically AABBA, where the first, second, and fifth lines rhyme with each other, and the third and fourth lines rhyme with each other. Limericks often have a playful or silly tone, and they often end with a punchline or twist that adds to the humour.

Here are our winners:

### Blake on a Lake

There once was a boy called Blake  
Who liked to swim in the lake  
He would take his best rubber boat  
That would help keep him a float  
So, he could take a little break.

Blake N – 8MLF

This second one doesn't fit the traditional format, but the judges felt it should get a special mention for the impressive amount of rhyme!

Maplewell Hall is a school but definitely not in York.  
And all these teachers getting fed up if students talk.  
Then we have Mr Smith who loves to walk.  
Also Mr Brooks who keeps his eye on you like a hawk.  
Mrs Wakeling likes Maths and her black board loves the chalk.  
Mr Russell says he's not stressed but he just needs torque.  
And in PE Mr Gray tells us to stand like a stork.  
When I walk around all I can smell from the kitchen is the pork.  
Theo C 9MSS

Thanks to everyone that took part, and a special mention to IICJ who donated half of the money raised on World Laughter Day to the library. We are hoping to improve the space by adding a comfy reading corner. If you can help us with this, please get in touch!



## Sparx Reader

This term in English we have introduced students to Sparx Reader, which is an online reading platform.

Sparx Reader helps every student to achieve regular independent reading, which is incredibly important for building vital literacy skills. Students can choose from a range of eBooks at their appropriate level and as they read, they'll answer questions to check they're reading carefully. Careful readers earn points meaning they can track their progress and climb the league table! 10 minutes of careful reading will earn you roughly 100 Sparx Reader points,

Here is our current top 15, well done to these careful readers!

Rank Name Reader Points

- 1 Emily M 4,933
- 2 Danyal M 3,906
- 3 Anna W 2,747
- 4 Max H 2,459
- 5 Emily W 2,346
- 6 Gregory G 1,727
- 7 Shayan C 1,661
- 8 Oscar D 1,365
- 9 Megs C 1,319
- 10 Alice K 1,209
- 11 Joseph P 1,182
- 12 Amelie B 1,169
- 13 Riley C 1,113
- 14 Jamie W 1,091
- 15 Archie G 1,025

Motivated readers who demonstrate consistent, careful reading can unlock Gold Reader. This means they can read any paper book from the library or from home by scanning in its barcode.

Frequently asked questions:

**How do they log in?** Students log in at [sparxreader.com](https://sparxreader.com). They will need to find their school and log in by clicking 'sign in with Google', they should then use their school email address to access their account. Your child can access Sparx Reader on any device that connects to the internet with a web browser.

**How can I support my child with their reading?** Sparx Reader adapts to each student's reading level, so it's important that you don't help by answering questions for them. If you help them, Sparx Reader might think they're a very strong reader and show them books that are too difficult. You can however help to provide a quiet space for your child to focus on their reading homework each week. The best way to support your child is to ask them about the book they're reading; what aspects they're enjoying, or what characters and events they've recently read about.

**How can I monitor the reading my child is doing?** You are able to keep track of the reading your child is doing by clicking through the link to the Parent Portal in your Sparx Maths weekly homework email. On the Parent Portal, you can choose to view homework progress for any Sparx learning system your child is using. For Sparx Reader, you can see progress with the current and previous homework, and browse books that your child has been reading as part of their current homework.

**What support is available at Maplewell?** Your child can access Sparx Reader at homework club, this runs on a Tuesday, Wednesday and Thursday lunch time and is supported by school staff from maths and English.

If you have any questions, please contact Mrs Durrands.



## COMPASS

### Peer Mentor Programme

As part of our COMPASS support, Mrs Arkley has facilitated a Peer Mentoring Programme with Greg G. Greg has worked really hard in learning how to support other pupils in areas such as listening and communicating; problem solving and helping others. He will be 'on duty' at Main Site starting in June supporting our younger pupils. Well done Greg!



### COMPASS News

Our Speech and Language Therapy Apprentice Hope has just started her second semester studying Speech and Language Therapy at Birmingham City University. Hope has just passed her first assignment on Anatomy and Physiology where she wrote an assignment on a case study about a student with Cerebral Palsy. Hope has just started her module on Linguistics of Human Communication and is finding it really helpful in her role at Maplewell as she can now transcribe the speech of the children she works with.

We are so proud of Hope and what this means for our students. Well Done!!



## CAN Enterprise

As part of the Young Enterprise Programme at Post 16, we work alongside a company mentor who gives us support and guidance throughout the programme.

We would like to introduce you to our mentor Tom from Wonky Candles.

How Wonky Candles began:

"My name is PJ. I have many medical conditions including Autism, deafness, blindness, epilepsy and more. So, all in all, I am rather **WONKY**.

I made a candle for the first time in the Lake District on holiday in 2018, and loved it so much I convinced my mum to let me make some more at home. I gave a few away to friends and they suggested selling them.

So, it all started there... Since then, I have had to upscale production **TWICE!** With the help of Minion 1 (Mum) and Minion 2 (Sophie). My mum's kitchen became my candle making hub. Mums kitchen soon became too small so we had to upscale again!

My brother Tom (Big Wonky) joined the Wonky team and we now have our very own Wonky World unit where we make and store our products and where all our orders get posted from".

The visit

Tom came to visit our students at the CAN. He gave the students an honest insight to the world of business alongside the positives and challenges Wonky Candles have faced. The students were encouraged to have a Q & A session with Tom, which they all thoroughly enjoyed. Tom also asked the students questions regarding their company Handmade Heaven.

Tom was such an inspiration for our students and he will be visiting us again in a few weeks' time. At the end of the programme we will plan a visit to his workshop to watch the production of candle making and hopefully have a try ourselves!

Some of our students with Tom.

If you would like to read more about Tom and Wonky Candles take a look at their website [www.wonkycandles.co.uk](http://www.wonkycandles.co.uk)

Thanks very much to everyone who stopped to chat, compliment our stall and buy our Handmade Heaven products at the summer fair. We had a great day in brilliant weather.

We made over £300 for our Young Enterprise business. We will be celebrating with a day out to Wonky Candles, our business mentors, to see how their factory works, make a candle for ourselves and test out their slushy machine!

Many thanks

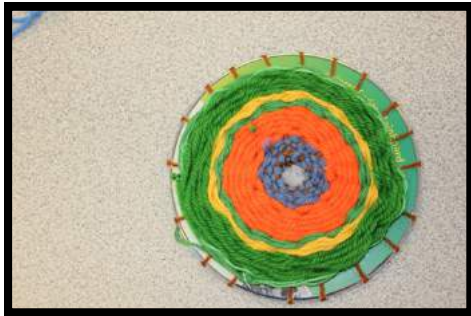
Handmade Heaven, a branch of Young Enterprise, Post 16





## Year 8 Art

Year 8 students have been learning weaving techniques. They explored mandala art and the textile art created by artist Xenobia Bailey. Using these as inspiration they wove mandalas onto recycled CDs and records, using brightly coloured wool. The woven pieces were then displayed in a design in which the circular weavings were overlapping as this echoes the style that Xenobia Bailey uses to exhibit her work.



# IT'S COMING... MAPLEWELL ARTS WEEK, 17<sup>TH</sup> – 21<sup>ST</sup> JUNE

This year, Maplewell Arts Week will celebrate all areas of the Arts. There will be opportunities for key stage 3 students to be involved one or more of the following workshops;

Singing, physical theatre, drama, dance, weaving, printing, card and paper sculpture, baking and creative writing.

Creative work and performances will be on display at our Mad Hatter's Tea Party.

Year 10 Performing Arts students will also be showcasing their talents throughout the week.



## News & Information

### Leavers Day 28th June

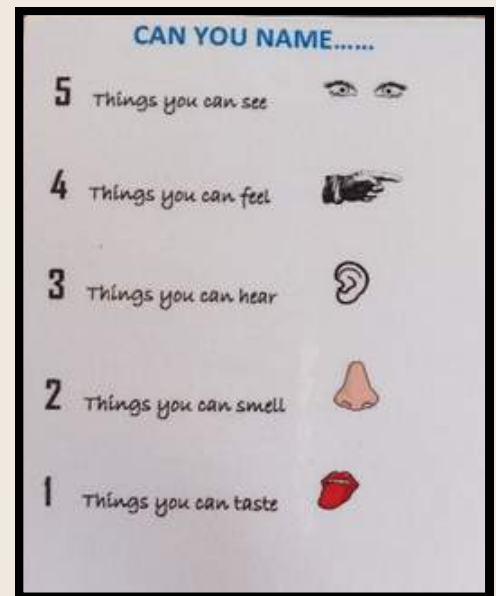
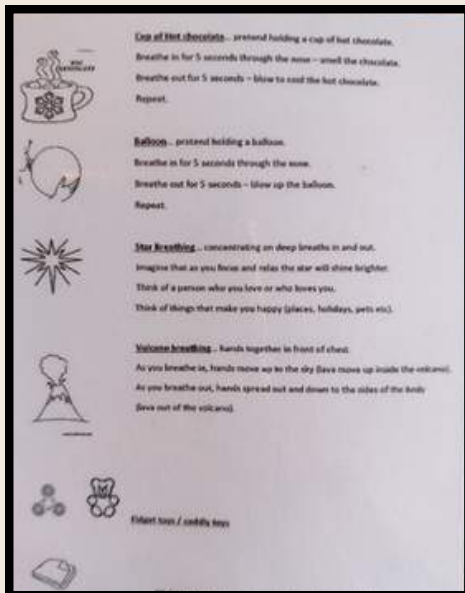
This applies to any students from Year 11 and Post 16 who will be leaving Maplewell Hall at the end of this academic year. Students in Year 11 who plan to attend our Post 16 provision next year will continue to benefit from our supported transition until 12th July 2024. Maplewell staff will be contacting parent/carers to discuss individual cases.

We are requesting wellies and walking boot donations for our DofE, Forest School, and Scout groups, please? Especially some larger sizes for the adult-sized KS4 and P16 students! If there are students leaving in the summer that will no longer need theirs, we will put them to good use! Donations can be dropped in KS4 MAP at the main site or see Stuart Dale for P16 drop-off.



Exam stress/anxiety is common with ALL students but especially here at Maplewell. COMPASS have created some small stress/anxiety cards for any students needing a little extra help during the next few weeks.

Please send your child to Mrs Arkley in COMPASS if you think they would benefit from a card.



### Term Dates

Summer Term 2024

Half Term Break

Monday 27th May 2024 to Friday 31st  
May 2024

-  
Friday 12th July 2024

School Closes

### Key Dates

Year 8 Progress Evening

Tuesday 4th June (Woodhouse Eaves)

-

Year 11 Rewards Day

Friday 27th June